



# Label printer **XC**

For two-tone printing.

## For two-tone printing

Two successively arranged thermal transfer printing units for simultaneous printing of two colors in one document.

The first printing unit is additionally equipped with a ribbon saver.

The XC-series meets the criteria for the new classification and labelling obligations for chemicals according to GHS.

Solid metal cover made of dye-cast aluminium.

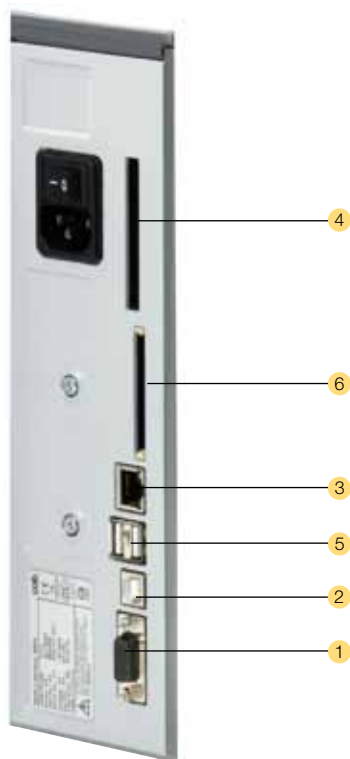
For big media rolls up to 300mm diameter.

Both printing units with the ribbon retainers, the operation panel and the electronic system are currently used in our successful A<sup>+</sup>-series industrial printers.



- 1 Big graphic display**  
White backlight guarantees optimal legibility.
- 2 Ribbon retainer**  
The three-part tightening axles allow a fast and easy ribbon exchange.
- 3 Easy adjustment**  
The printheads are pressed down with plungers. One is mounted stationary at the inner surface, the other one is pushed to the right label margin.
- 4 Peripheral connection**  
All additional modules such as stacker and cutter are easily adjustable. All peripheral devices can be attached to the printer with two adapters and affixed with one screw in a matter of seconds.
- 5 Solid, buckling resistant metal chassis**  
It is made of die-cast aluminium. All devices are assembled to it.
- 6 Roll holder**  
The swing lever and the integrated brake make sure that the labels are unwound with constant tension.
- 7 Ribbon saver for printhead 1**  
This process avoids smudging printing when pulling back labels after the printing process. Ribbon is saved when large labels with a small printed area are required.

## All required interfaces



- 1 RS232C interface *without function*.
- 2 USB 2.0 Slave interface.
- 3 Ethernet 10/100 Base T-interface with TCP/IP.
- 4 Slot for Wireless LAN-Wifi-card.
- 5 Two USB-Master-interfaces to connect an external operation panel, keyboard, scanner or Service Key.
- 6 Slot for memory card CompactFlash Type I.

### Option



cab WLAN card 802.11 b/g.

### Accessories for the stand-alone operation



#### Memory card

CompactFlash Type I



#### Compact keyboard

Connection: USB  
 Number of keys: 86  
 L x W mm: 282 x 132,  
 Cherry G84-4100



#### Standard keyboard

Connection: USB  
 Number of keys: 115  
 L x W mm: 460 x 192  
 Cherry G83-6105

The functions of the devices and conformity to CE-standards are only warranted by using the accessories made by cab or recommended by cab.

## Stand-alone operation

### Printing with a cab printer without PC.

The layout of the labels is created either with the label software or direct programming via text editor directly on the PC. Label formats, fonts and graphic data, serial data and data base contents are saved or imported on the CF memory card or the internal IFFS printer memory.

Only variable data is sent to the printer via keyboard or host computer before being printed out. Data of a barcode scanner or a scale can be additionally received by the printer.

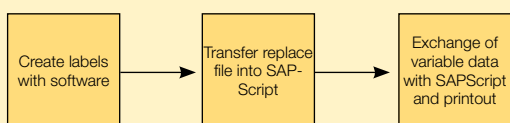


J	<b>Job Start</b>
H 100	<b>Speed (100 mm/s)</b>
O R	<b>Orientation rotated by 180°</b>
S l1;0,0,68,70,100	<b>Size of label (100x68 mm, gap 2 mm)</b>
T 10,10,0,5,pt20:sample	<b>Text object/font: Swiss bold, 20 pt</b>
B 10,20,0,EAN-13,SC2;401234512345	<b>Barcode EAN 13, size SC 2</b>
G 8,3,5,0;R:30,9,0,3,0,3	<b>Graphic, box 30 x 9 mm, Line strength 0.3 mm</b>
A 1	<b>Number of labels (in this example 1)</b>

## Direct programming with J-Script

The printer language is easy to understand and integrate into your host system. Linkage of variable data with host application. Label design, graphics and fonts are recorded on the compact flash card. The host computer sends only the variable data to the printer.

## SAP® Printer Vendor Program



Upload-Method SAP R/3 note no. 137431

## Integration into SAP R/3

In collaboration with SAP cab developed the so-called "Replace method" in order to control the cab printers with SAPScript from SAP/R3.

As a Silver Level-partner in SAP's Printer Vendor Program cab has access to the SAP development area for optimal printer support in a SAP environment.

SAP and R/3 are registered trademarks of SAP AG.

```

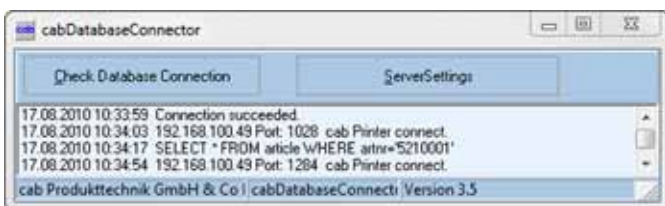
calypso.lib - Editor
Datei Bearbeiten Format Ansicht ?
<ABC>
label start
input a$
if left$(a$,15)="194300301480070" then
  print "R t2;",mid$(a$,16)
endif
if left$(a$,15)="194300300580172" then
  print "R t3;",mid$(a$,16)
endif
if left$(a$,15)="194300301970073" then
  print "R t1;",mid$(a$,16)
endif
if a$="Q0001" then
  print "A 1"
endif
goto start
  
```

## abc - Basic Compiler

As an integrated element of the firmware it enables the printer to process data via BASIC programming before being transmitted to print editing. Thereby external printer languages can be replaced or data from other systems, e.g. SPS or a scale, can be transferred to be printed on different label sizes.



Example of use:  
Connection to a scale



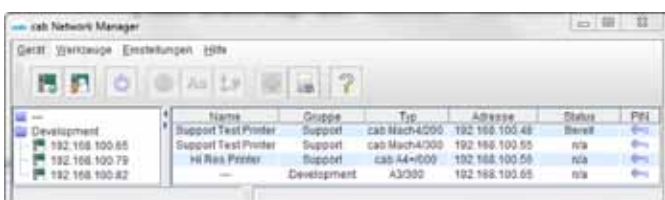
## Database Connector

In the stand-alone mode with additional network connection the Database Connector enables stand-alone printers to link up data from a SQL-compatible database and to print. Data can be rewritten and modified simultaneously with the printing process.



## Printer monitoring with Intra- and Internet

The integrated HTTP- and FTP-Server enables, with standard programs like web browser or FTP-clients, the print monitoring, configuration, the firmware-update and the administration of the memory card. Status signals, warning or error signals are sent to users or administrators either as email or SNMP-datagram via SNMP- and SMTP-clients. Synchronization of time and date with a time server.



## Administration Network Manager

The cab Network Manager enables the user to control multiple printers across a network simultaneously. It supports monitoring, configuration, firmware updates, memory card, datasynchronization and PIN-administration centrally.



**WHQL-accredited Windows printer driver for**

- Windows 2000
- Windows XP
- Windows Vista
- Windows 7
- Windows Server 2003
- Windows Server 2008
- Windows Server 2008 R2

Our printer drivers are officially accredited and signed by Microsoft. They offer highest stability on your Windows operating system. The programs Word, Excel, Access, Corel Draw etc. permit the design and printing of labels.

Microsoft® is a registered trademark of Microsoft Corporation.



## Label software

**cablabel R2+**

**A powerful label software for free, specially designed for cab printers and print & apply systems.**

The ideal design of a label is realizable by using different fonts, barcodes and graphics in variable heights, widths and printing directions.

The cab printers offer, besides the loadable MS Windows-available TrueType Fonts, a large number of internal bitmap and vector fonts. Due to the support of the most commonly used codepages country-specific special characters are also printable.

Highly productive functions permit the design and printing of complex labels within just a few minutes. cablabel R2+ supports special functions of the cab printers such as real-time clock, printer counter, stand-alone operation without PC, circular fonts or the display of the data stream into a data file. The MDI-technology permits the synchronous tensioning of several labels and the switching of different objects.



Cablabel R2+ is available in 24 different languages for the following operating systems:

- Windows XP
- Windows Vista
- Windows 7
- Windows Server 2003\*
- Windows Server 2008\*

\*Terminalserver / Citrix are not supported.

**Additional label software...**

...such as Codesoft, Nicelabel, Easylabel, Bartender, Label Matrix or Labelview support cab's transfer printers and print & apply systems.

More information is available on our homepage.

1. Printhead		XC4	XC6
Printing method		Thermal transfer	
Print resolution dpi		300	300
Print speed up to mm/s		30, 40, 50, 75, 100, 125	30, 40, 50, 75, 100, 125
Print width up to mm		105.6	162.6
2. Material			
Labels, continuous rolls or fan-folded		Paper, cardboard, textiles, synthetics like PET, PE, PP, PVC, PU, Acrylat, PI	
Thickness mm / weight g/m <sup>2</sup>		0.05 - 0.8 / 60 - 180	
Width:	Labels mm	20 - 116	50 - 176
	of liner or of continuous material mm	25 - 120	50 - 180
Height <sup>1)</sup> :	Labels mm	20 - 2000	20 - 1500
Media roll:	Total diameter up to mm	300	
	Core diameter mm	76	
	Winding direction	outside or inside	
3. Ribbon			
Ink		outside or inside	
Roll diameter up to mm		72	
Core diameter mm		25,4	
Ribbon length variable up to m		360	
Width <sup>2)</sup> up to mm		25 - 114	55 - 165
Saver printhead 1		■	
5. Dimensions			
Height x Depth x Width mm		395 x 554 x 248	395 x 554 x 358
Weight kg		22	24
6. Label sensor			
See-through sensor		for leading edge of the label or punching marks and end of material	
Reflective sensor from the bottom		for printing marks	
Distance to leading edge mm		5 - 53	
7. Electronics			
Processor high speed 32 Bit ColdFire/Taktrate MHz		266	
(RAM) MB		64	
Memory IFFS MB Flash		8	
Slot for memory CompactFlash-card Type I		■	
Slot for Wireless LAN-card		■	
Battery cache for		Real-time clock, printout of time and date Storage of data with shut-down	
Warning signal		Acoustic signal when error	
8. Interfaces			
USB 2.0 High Speed Slave for PC-connection		■	
Ethernet 10/100 Base T, LPD, RawIP-Printing, ftp-Printing, DHCP, HTTP, FTP, SMTP, SNMP, TIME, Zeroconf, mDNS, SOAP		■	
Peripheral connection		■	
WLAN card 802.11b/g WEP/WPA PSK (TKIP)		□	
2 x USB Master for		external operation panel, keyboard, scanner or service key	
9. Operating data			
Power supply		100 - 240 V ~ 50/60 Hz, PFC	
Power consumption		max. 300 W	
Temperature / Humidity:	Operation	+5 - 40°C, / 10 - 85% not condensing	
	Storage	+0 - 60°C, / 20 - 85% not condensing	
	Transport	-25 - 60°C, / 20 - 85% not condensing	
Approvals		CE, in preparation FCC class A, CB, CCC, UL	

<sup>1)</sup> Depending on label size, material and adhesive limitations are possible. Critical material or applications have to be tested and cleared.

<sup>2)</sup> The ribbon should approximate the width of the labels in order to avoid drapery.

<b>10. Operation panel</b>	
Buttons/LED display	Pause, Feed, Cancel, Menu, Enter, 4 x Cursor
LCD graphic display	Text 4 lines, ca. 20 characters per line
Width x Height mm	60 x 40
<b>11. Settings</b>	
	Digital or analog clock      Time System settings                  Date Print parameters                  Interfaces 25 language settings          Security
<b>12. Monitoring</b>	
Stop printing if	End of ribbon End of labels Printhead open
On the display	Data reception                  Clock WLAN field intensity          Date sheet Ethernet state                  abc Debug Used memory                  Input buffer Temperature printhead Access to memory card Remaining quantity of ribbon
<b>13. Test routines</b>	
System diagnosis	When switched on with testing of printhead
Short status, status print	Font list, device list, WLAN state, profile of label, test grid, monitor mode, PPP state
Status reports	Extensive status print with information about setting, e.g. print length counter, runtime counter etc. Request of machine state via software command. Detailed status messages on the display, e.g. network error-no link, barcode error etc.
<b>14. Fonts</b>	
Font types	5 Bitmap fonts incl. OCR-A, OCR-B and 3 Vector fonts Swiss 721, Swiss 721 Bold and Monospace 821 available internally, loadable TrueType fonts. Optional Chinese (simplified Chinese) Optional Thai
Character sets	Windows 1250 up to 1257, DOS 437, 737, 775, 850, 852, 857, 862, 864, 866, 869, EBCDIC 500, ISO 8859-1 up to -10 and -13 up to -16, WinOEM 720, UTF-8, Macintosh Roman, DEC MCS, KOI8-R. All West and East European latin, cyrillic, greek, hebrew and arabic characters are supported. Optional Thai and Chinese
Bitmap-Fonts	Size of width and height 1 - 3 mm zoom 2-10. Orientation 0°, 90°, 180°, 270°
Vector-/TrueType fonts	Size of width and height 0.9 - 128 mm variable zoom, Orientation 360° in steps of 1°
Font formats	Bold, italic, underlined, outline, negative, grey, vertical, depending on character fonts
Font width	Variable

<b>15. Graphics</b>	
Graphic elements	Line, arrow, box, circle, ellipse, filled and filled with fading
Graphic formats	PCX, IMG, BMP, TIF, MAC, GIF, PNG
<b>16. Barcodes</b>	
Linear Barcodes	Code 39, Code 93 Code 39 Full ASCII Code 128 A, B, C Codabar EAN 8, 13 EAN/UCC 128 EAN/UPC Appendix 2 EAN/UPC Appendix 5 FIM HIBC Interleaved 2/5 Ident- and leader code of Deutsche Post AG JAN 8, 13 MSI Plessey Postnet RSS 14 UPC A, E, E0
2D-Codes	Aztec, Codablock F, Data Matrix, PDF 417, Micro PDF 417, UPS Maxicode, QR-Code, RSS 14 truncated, limited, stacked and stacked omnidirectional, EAN-Datamatrix, GS1 Data Bar All codes variable in height, module width and ratio. Orientation 0°, 90°, 180°, 270°. Optional with check digit, printed characters and Start/Stop code depending on code type.
<b>17. Software</b>	
Programming	J-Script direct programming <input checked="" type="checkbox"/> abc-Basic Compiler <input checked="" type="checkbox"/> Database Connector <input type="checkbox"/>
System diagnosis/administration	Printer monitoring <input checked="" type="checkbox"/> Network Manager <input type="checkbox"/>
Label software	cablabel R2+ <input checked="" type="checkbox"/> Codesoft, Nicelabel, Easylabel <input type="checkbox"/> Bartender, Label Matrix, Labelview <input type="checkbox"/>
Windows driver certified	32/64 bit for Windows 2000 Server 2003 Windows XP Server 2008 <input checked="" type="checkbox"/> Windows Vista Server 2008 R2 Windows 7
Stand-alone operation	<input checked="" type="checkbox"/>
	Standard <input checked="" type="checkbox"/> Option <input type="checkbox"/> Authorized distribution by resellers <input type="checkbox"/>



**Innovative technology for better climate protection.**  
**Energy-saving.**  
**Environmentally conscious.**

The specifications are according to our current technical knowledge. They are subject to change.

Please recall current data from [www.cab.de](http://www.cab.de)

## Cut. Perforate. Stack.



### Cutter

The cutter is used to cut paper, pressure sensitive labels, cardboard, textiles, synthetics or heat shrink tubes.

Cutter	CU4	CU6
Material width up to mm	120	180
Weight of material gr/m <sup>2</sup> /cardboard	60 - 500	
Material thickness mm	0.05 - 0.8	
Cutting length mm	< 5	
Height of pile up to mm	–	–
Media channel height up to mm	2.5	
Cuts/min.	120	110
Stop print job if:	Final position not reached	



### Stacker with cutter/ only for XC4

The printed materials are cut and piled up with the stacker. The print job stops when the height of the pile is reached.

There might be restrictions at the use of stiff or curved materials. We recommend the testing of such materials at cab.

Stacker with cutter	ST4/L
Material width up to mm	20 - 110
Weight of material gr/m <sup>2</sup> /cardboard	60 - 300
Material thickness mm	0.05 - 0.8
Cutting length mm	20 - 150
Height of pile up to mm	140
Media channel height up to mm	1.2
Cuts/min.	120
Stop print job if:	Final position not reached cover open height of pile is reached



### Storage table label width x height

The storage table and the protective cover are adjusted to the label size and have to be ordered separately.


















### External rewinder

The label winding is optional inside or outside.

A smooth and tight winding is due to the electronic control of the swing arm.

External rewinder	ER4/210	ER4/300	ER6/300
Application	XC4	XC4	XC6
Material width up to mm	120	120	180
Roll Ø max. mm	205	300	300
Core Ø mm	40 / 76		
Operating voltage	100 - 240 V~ 50/60 Hz		
Label winding	outside or inside		

	Part No.	Hardware	dpi
	<b>5965700</b>	Label printer XC4	300
	<b>5965701</b>	Label printer XC6	300
<b>Content of delivery:</b>			
		Label printer, Power cable Type E+F, length 1,8 m, Connecting cables USB, length 1,8 m Operation manual de/en	
<b>DVD:</b>		Operation manual de/en/fr, Configurations manual de/en/fr, Service manual de/en, Spare part list de/en, Programming manual en, Windows printer driver 32/64 bit in 19 languages for Windows 2000 Server 2003 Windows XP Server 2008 Windows Vista Server 2008 R2 Windows 7	
		Label software cablabel R2+ in 24 languages Database Connector en	
	Part No.	Expendable parts	
	<b>5954072.001</b>	Printhead 4/300	
	<b>5954106.001</b>	Printhead 6/300	
	<b>5954180.001</b>	Print roller DR4	
	<b>5954245.001</b>	Print roller DR6	
	Part No.	Accessories	
	<b>5948000</b>	Cutter CU4	
	<b>5948001</b>	Cutter CU6	
	<b>5965730</b>	External rewinder ER4/210	
	<b>5965731</b>	External rewinder ER4/300	
	<b>5965732</b>	External rewinder ER6/300	
	<b>5541311</b>	Stacker with cutter ST4/L	
	<b>55xxxxx</b>	Storage table ST4/L, label B x H	

	Part No.	Accessoires
	<b>5901630</b>	Compact keyboard USB Cherry G84-4100
	<b>5901626</b>	Standard keyboard USB Cherry G83-6105
	<b>5561043</b>	Memory card CompactFlash Type I
	Part No.	Interfaces
	<b>5561041</b>	WLAN-card 802.11 b/g
	Part No.	Connection cable
	<b>5918008</b>	Patch cable KAT 5e, 3 m grey
	Part No.	Software
	<b>DL 40100</b>	Database Connector Licence
	<b>5580215</b>	Administration Network Manager
		Content of delivery Label software cablabel R2+ on request Codesoft, NiceLabel, Easylabel
	<b>9008486</b>	Programming manual English, printed copy

The specifications are according to our current technical knowledge. They are subject to change.



# The cab delivery program



Label printer A+ series



Label printer XD4 for double sided printing



Label printer XC6 for two-tone printing



Label printer e4



Label printer MACH4



Labels / Ribbons



Label dispenser HS150



Print and Apply Hermes+



Print module PX-series



Label software



Laser marking systems FL-series



Laser safety housing



- Headquarter in Germany
- cab subsidiaries  
350 distribution partners  
in more than 80 countries.



cab is represented in every active commercial centre - worldwide.

Four your efficient process: you can count on us in your day-to-day operations.

Welcome to our website – [www.cab.de](http://www.cab.de)

Customer proximity worldwide with perfect service and short reaction time.

#### Germany

cab Produkttechnik  
GmbH & Co KG  
Postfach 1904  
76007 Karlsruhe  
Wilhelm-Schickard-Str. 14  
76131 Karlsruhe  
Telefon +49 721 6626-0  
Telefax +49 721 6626-249  
[www.cab.de](http://www.cab.de)  
[info@cab.de](mailto:info@cab.de)

#### France

cab technologies s.a.r.l.  
67350 Niedermodern  
Téléphone +33 388 722 501  
[www.cab.de](http://www.cab.de)  
[info@cab-technologies.fr](mailto:info@cab-technologies.fr)

#### España

cab España S.L.  
08304 Mataró (Barcelona)  
Teléfono +34 937 414 605  
[www.cab.de](http://www.cab.de)  
[info@cabsl.com](mailto:info@cabsl.com)

#### USA

cab Technology Inc.  
Tyngsboro MA, 01879  
Phone +1 978 649 0293  
[www.cabtechn.com](http://www.cabtechn.com)  
[info@cabtechn.com](mailto:info@cabtechn.com)

#### South Africa

cab Technology (Pty.) Ltd.  
2125 Randburg  
Phone +27 11-886-3580  
[www.cab.de](http://www.cab.de)  
[info@cabtech.co.za](mailto:info@cabtech.co.za)

#### Asia 亞洲分公司

希愛比科技股份有限公司  
cab Technology Co., Ltd.  
台灣台北縣中和市中正路 700 號 9F-8  
Junghe 23552, Taipei, Taiwan  
電話 Phone +886 2 8227 3966  
網址 [www.cabasia.net](http://www.cabasia.net)  
詢問 [cabasia@cab.de](mailto:cabasia@cab.de)

#### China 中国

銳博(上海)貿易有限公司  
cab (Shanghai) Trading Co.,Ltd  
上海市延安西路2299弄11C60室  
电话 Phone +86 21 6236-3161  
询问 [cabasia@cab.de](mailto:cabasia@cab.de)

© Copyright by cab

**Representatives in other countries on request.**

This documentation as well as the translations hereof are properties of cab GmbH & Co KG.  
The replication, the processing, the reproduction or the propagation on the whole or in parts requires our prior written agreement.